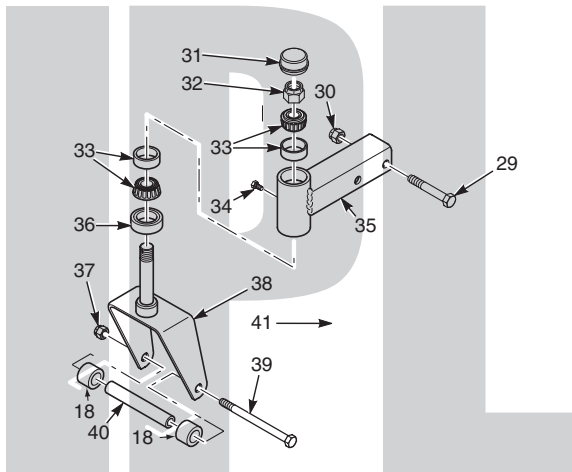
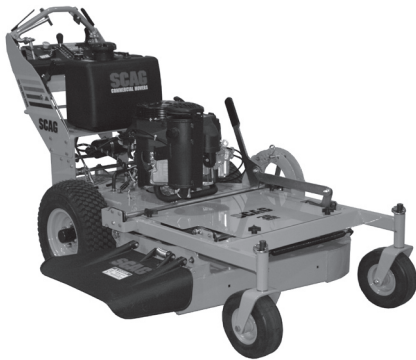


# SCAG<sup>®</sup>

## POWER EQUIPMENT



# ILLUSTRATED PARTS MANUAL



## Model SWZ Walk-Behind

THIS MANUAL CONTAINS THE ILLUSTRATED PARTS LIST FOR MODELS:

SWZT36-481FS  
SWZT36-14FS  
SWZT48-541FS  
SWZT48-15FS  
SWZT52-18FS  
SWZT-18FSE

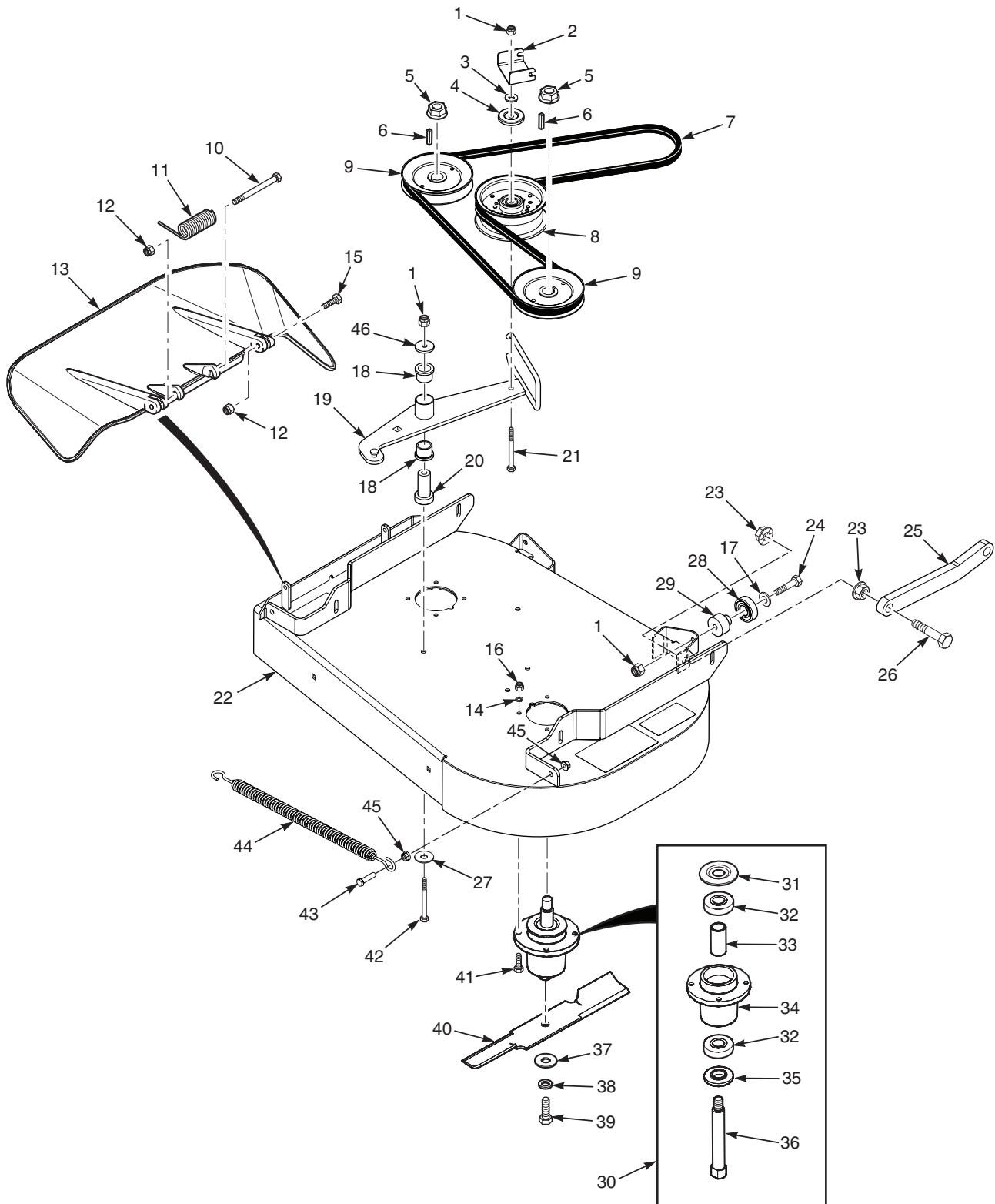
with a serial number of J3400001 to J3499999  
with a serial number of J7200001 to J7299999  
with a serial number of J3500001 to J3599999  
with a serial number of J7300001 to J7399999  
with a serial number of J7400001 to J7499999  
with a serial number of K4700001 to K4799999



## Table of Contents

36" CUTTER DECK.....	2
48" CUTTER DECK.....	4
52" CUTTER DECK.....	6
CUTTER DECK CONTROLS .....	8
ENGINE DECK & HYDRAULIC SYSTEM.....	10
STEERING CONTROLS.....	12
BRAKE COMPONENTS .....	14
ELECTRICAL SYSTEM AND THROTTLE CONTROL - MANUAL START .....	16
ELECTRICAL SYSTEM AND THROTTLE CONTROL - ELECTRIC START.....	18
SWZT FUEL SYSTEM.....	20
ZT-2800 HYDRAULIC AXLE ASSEMBLY .....	22
REPLACEMENT DECALS AND INFORMATION PLATES .....	24
SWZT ELECTRICAL SCHEMATIC - MANUAL START .....	26

### 36" CUTTER DECK



2014 SWZT 36CD

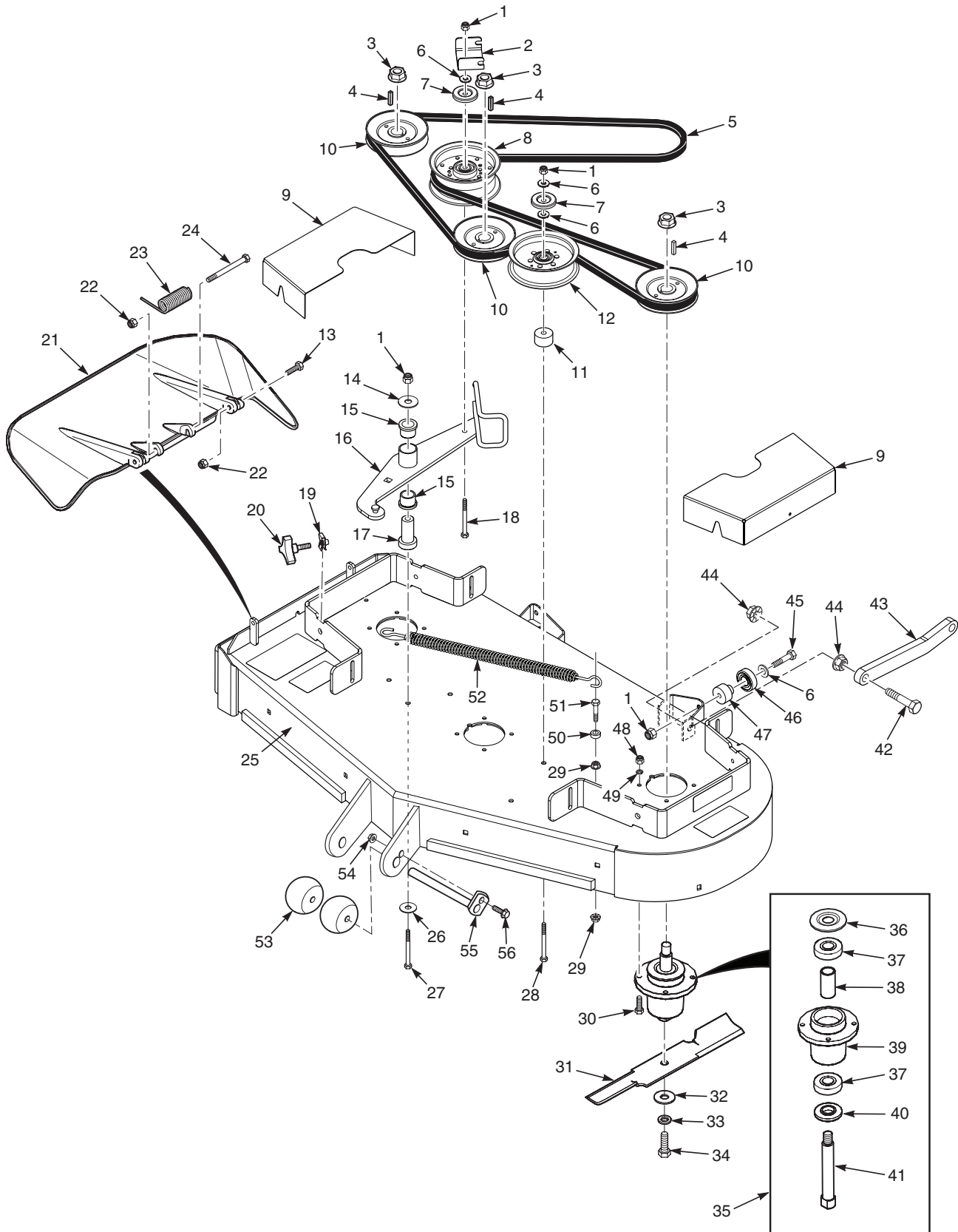
## 36" CUTTER DECK

Ref. No.	Part No.	Description
1	04021-09	Nut, Elastic Stop 3/8-16
2	424615	Bracket, Belt Guide
3	04043-04	Flatwasher, 3/8-.391 x .938 x .105
4	424367	Dust Shield
5	04112-06	Nut, 3/4-16 Spiral Lock
6	04063-01	Key, 1/4 x 1/4 x 1-1/4"
7	484619	Belt, Cutter Deck
8	483851	Pulley, 5" Idler
9	483324	Pulley, 5.73" OD - 25mm Bore
10	04001-154	Bolt, Hex Head 5/16-18 x 4-3/4"
11	482245	Spring, Discharge Chute
12	04021-10	Nut, Elastic Stop 5/16-18
13	462031	Discharge Chute Assembly
*	462355	CA Discharge Chute
*	425872	Turbo Baffle
14	04030-03	Lockwasher, 5/16 Spring
15	04001-12	Bolt, Hex Head 5/16-18 x 1-3/4"
16	04021-22	Nut, Elastic Stop 5/16-18
17	04043-04	Flatwasher, 3/8-.391 x .938 x .105 Hardened
18	483453-03	Bearing, Plastic
19	462190	Idler Arm (incl. item #18)
20	43708	Pivot, Idler
21	04001-62	Bolt, Hex Head 3/8-16 x 3-1/4"
22	462571	Cutter Deck w/Decals, SMWZT-36

Ref. No.	Part No.	Description
23	04019-06	Nut, Serrated Flange 1/2-13
24	04001-46	Bolt, Hex Head 3/8-16 x 2-1/4"
25	425959	Pusharm
26	04001-72	Bolt, Hex Head 1/2-13 x 2"
27	04041-38	Flatwasher, 3/8-.406 x 2.25" x .188
28	483379	Bearing
29	43703	Spacer, Bearing
30	461950	Spindle Assembly
31	483304	Debris Shield
32	483303	Bearing
33	43693	Spacer, Bearing
34	462014	Spindle Housing Assembly (incl. item #32, 33)
35	43694	Protector, Bearing
36	43695	Shaft, Spindle
37	04043-06	Flatwasher, 5/8-11 x 1-1/2"
38	04030-07	Lockwasher, 1/2 Spring
39	04001-121	Bolt, Hex Head 5/8-11 x 1-1/2"
40	482878	Cutter Blade, 18"
41	04001-175	Bolt, Hex Head 5/16-18 x 1-1/2" Gr.8
42	04001-51	Bolt, Hex Head 3/8-16 x 3-3/4"
43	04001-136	Bolt, Hex Head 3/8-16 x 1-1/2" Gr.8
44	483375	Spring, Idler
45	04019-04	Nut, Serrated Flange 3/8-16
46	04041-11	Flatwasher, 3/8-.406 x 1-1/2"

\* = California Models Only (not shown)

### 48" CUTTER DECK



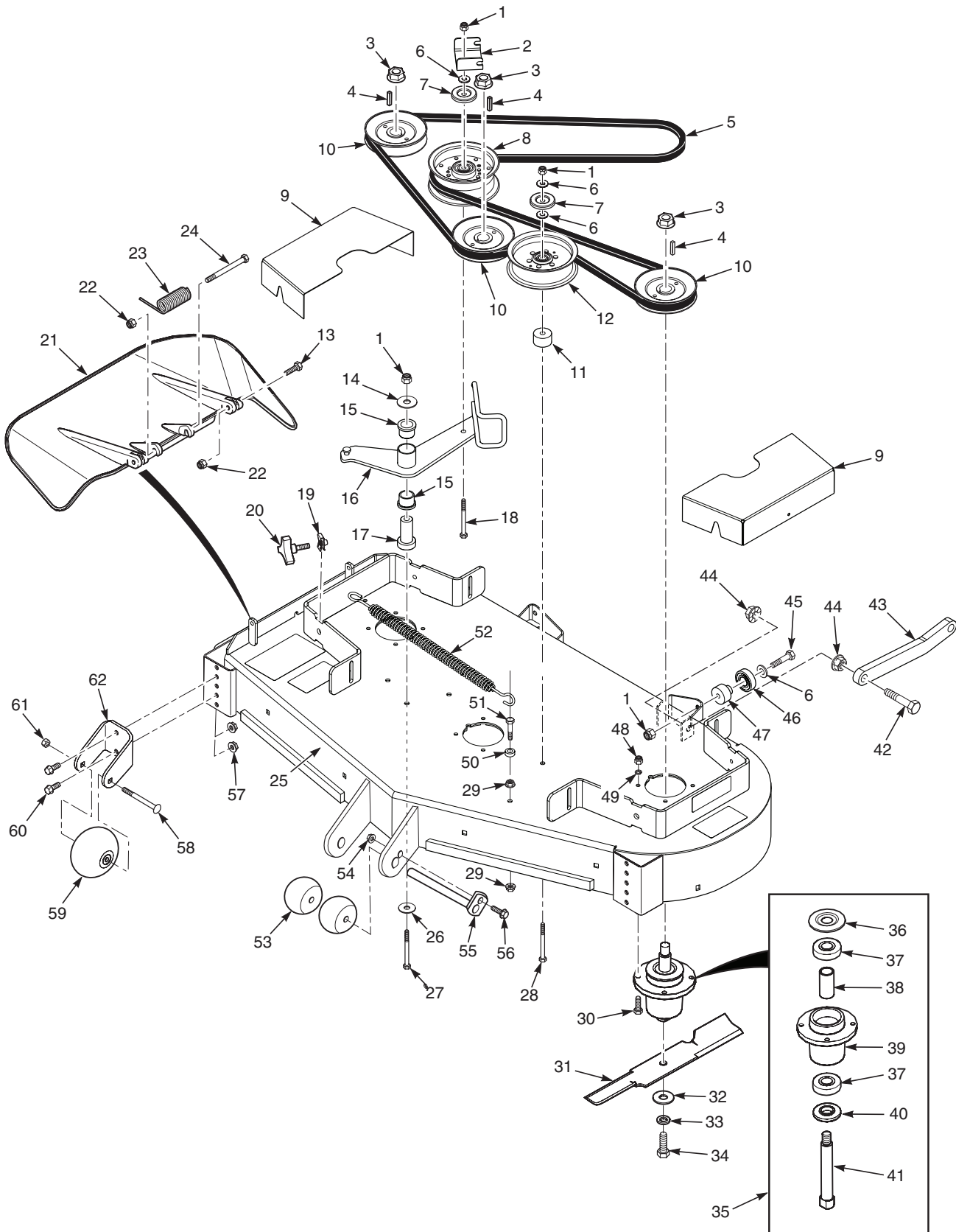
## 48" CUTTER DECK

Ref. No.	Part No.	Description
1	04021-09	Nut, Elastic Stop 3/8-16
2	424615	Bracket, Belt Guide
3	04112-06	Nut, 3/4-16 Spiral Lock
4	04063-01	Key, 1/4 x 1/4 x 1-1/4"
5	484618	Belt, Cutter Deck
6	04043-04	Flatwasher, 3/8-.391 x .938 x .105
7	424367	Dust Shield
8	483851	Pulley, 5" Idler
9	425978	Belt Cover
10	483323	Pulley, 5.13" OD - 25mm Bore
11	43711	Spacer
12	483422	Pulley, 5" Idler
13	04001-12	Bolt, Hex Head 5/16-18 x 1-3/4"
14	04041-11	Flatwasher, 3/8-.406 x 1-1/2"
15	483453-03	Bearing
16	462191	Idler Arm (incl. item #15)
17	43708	Pivot, Idler
18	04001-62	Bolt, Hex Head 3/8-16 x 3-1/4"
19	04110-04	U-Nut, 3/8-16
20	481625-01	Knob w/Stud
21	462031	Discharge Chute Assembly
*	462472	CA Discharge Chute
*	425619	Turbo Baffle
22	04021-10	Nut, Elastic Stop 5/16-18
23	482245	Spring, Discharge Chute
24	04001-154	Bolt, Hex Head 5/16-18 x 4-3/4"
25	462655	Cutter Deck w/Decals, SMWZT-48
26	04041-38	Flatwasher, 3/8-.406 x 2.25" x .188
27	04001-51	Bolt, Hex Head 3/8-16 x 3-3/4"

Ref. No.	Part No.	Description
28	04001-77	Bolt, Hex Head 3/8-16 x 3-1/2"
29	04019-04	Nut, Serrated Flange 3/8-16
30	04001-175	Bolt, Hex Head 5/16-18 x 1-1/2" Gr.8
31	482877	Cutter Blade, 16-1/2"
32	04043-06	Flatwasher, 5/8-.688 x 1.75 x .134 HD
33	04030-07	Lockwasher, 1/2 Spring
34	04001-121	Bolt, Hex Head 5/8-11 x 1-1/2"
35	461950	Spindle Assembly
36	483304	Debris Shield
37	483303	Bearing
38	43693	Spacer
39	462014	Spindle Housing Assembly (Incl. item #37, 38)
40	43694	Protector, Bearing
41	43695	Shaft, Spindle
42	04001-72	Bolt, Hex Head 1/2-13 x 2"
43	425959	Pusharm
44	04019-06	Nut, Serrated Flange 1/2-13
45	04001-46	Bolt, Hex Head 3/8-16 x 2-1/4"
46	483379	Bearing
47	43703	Spacer, Bearing
48	04021-22	Nut, Elastic Stop 5/16-18
49	04030-03	Lockwasher, 5/16 Spring
50	43063	Spacer
51	04001-136	Bolt, Hex Head 3/8-16 x 1-1/2 Gr.8
52	483375	Spring, Idler
53	482295	Wheel, Anti-Scalp
54	04019-03	Nut, Serrated Flange 5/16-18
55	461926	Shaft Weldment
56	04001-09	Bolt, Hex Head 5/16-18 x 1"

\* = California Models Only (not shown)

### 52" CUTTER DECK



## Section 8

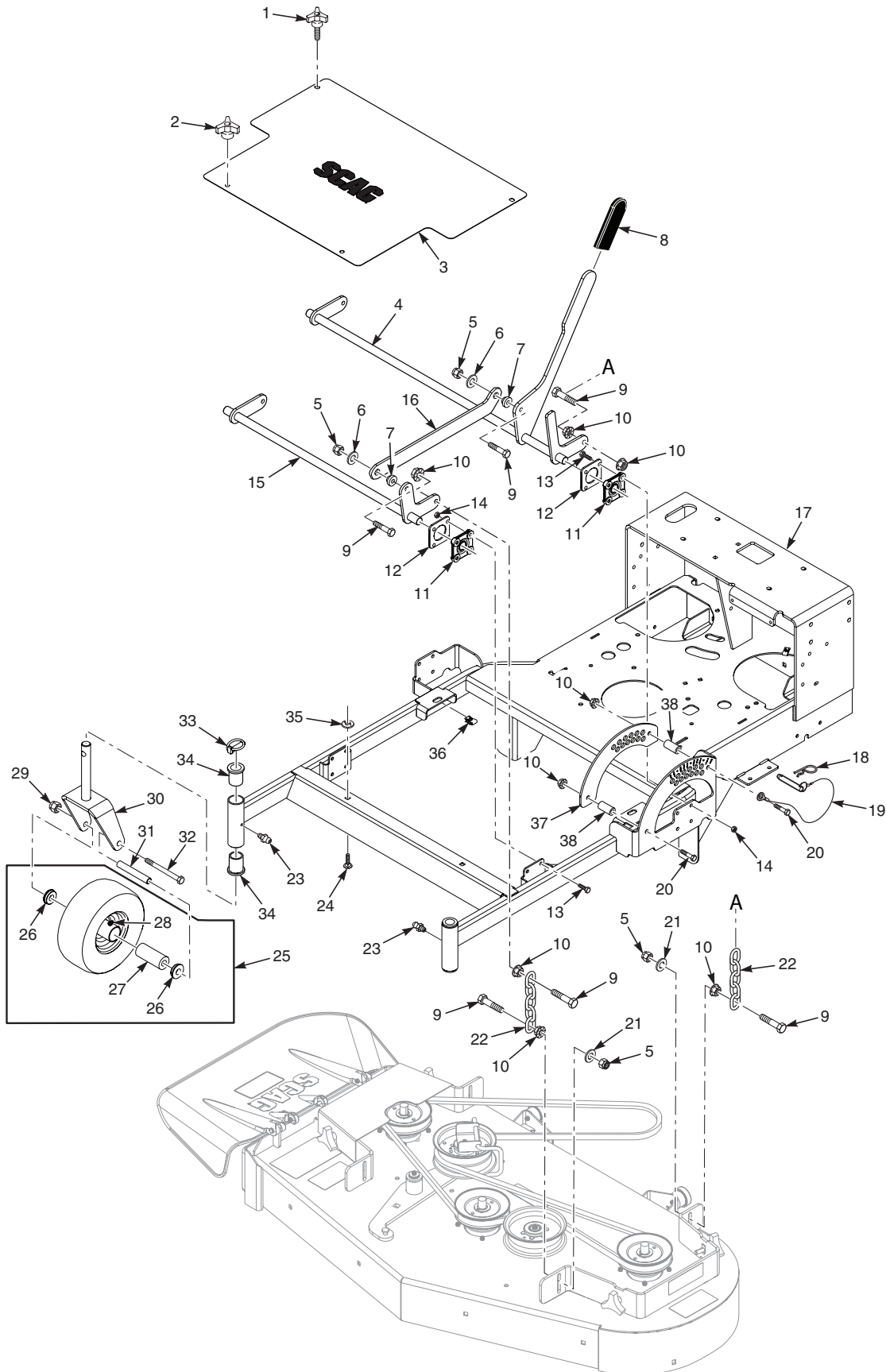
### 52" CUTTER DECK

Ref. No.	Part No.	Description
1	04021-09	Nut, Elastic Stop 3/8-16
2	424615	Bracket, Belt Guide
3	04112-06	Nut, 3/4-16 Spiral Lock
4	04063-01	Key, 1/4 x 1/4 x 1-1/4"
5	484695	Belt, Cutter Deck
6	04043-04	Flatwasher, 3/8-.391 x .938 x .105
7	424367	Dust Shield
8	483210	Pulley, 5" Idler
9	425979	Belt Cover
10	483324	Pulley, 5.73" OD - 25mm Bore
11	43711	Spacer
12	483422	Pulley, 5" Idler
13	04001-12	Bolt, Hex Head 5/16-18 x 1-3/4"
14	04041-11	Flatwasher, 3/8-.406 x 1-1/2"
15	483453-03	Bearing
16	462672	Idler Arm (incl. item #15)
17	43708	Pivot, Idler
18	04001-62	Bolt, Hex Head 3/8-16 x 3-1/4"
19	04110-04	U-Nut, 3/8-16
20	481625-01	Knob w/Stud
21	462032	Discharge Chute Assembly
*	462474	CA Discharge Chute
*	424211	Turbo Baffle
22	04021-10	Nut, Elastic Stop 5/16-18
23	482245	Spring, Discharge Chute
24	04001-154	Bolt, Hex Head 5/16-18 x 4-3/4"
25	462573	Cutter Deck w/Decals, SMWZT-52
26	04041-38	Flatwasher, 3/8-.406 x 2.25" x .188
27	04001-51	Bolt, Hex Head 3/8-16 x 3-3/4"
28	04001-77	Bolt, Hex Head 3/8-16 x 3-1/2"
29	04019-04	Nut, Serrated Flange 3/8-16
30	04001-175	Bolt, Hex Head 5/16-18 x 1-1/2" Gr.8

Ref. No.	Part No.	Description
31	482878	Cutter Blade, 18"
32	04043-06	Flatwasher, 5/8-.688 x 1.75 x .134 HD
33	04030-07	Lockwasher, 1/2 Spring
34	04001-121	Bolt, Hex Head 5/8-11 x 1-1/2"
35	461950	Spindle Assembly
36	483304	Debris Shield
37	483303	Bearing
38	43693	Spacer
39	462014	Spindle Housing Assembly (Incl. item #37, 38)
40	43694	Protector, Bearing
41	43695	Shaft, Spindle
42	04001-72	Bolt, Hex Head 1/2-13 x 2"
43	425959	Pusharm
44	04019-06	Nut, Serrated Flange 1/2-13
45	04001-46	Bolt, Hex Head 3/8-16 x 2-1/4"
46	483379	Bearing
47	43703	Spacer, Bearing
48	04021-22	Nut, Elastic Stop 5/16-18
49	04030-03	Lockwasher, 5/16 Spring
50	43063	Spacer
51	04001-136	Bolt, Hex Head 3/8-16 x 1-1/2 Gr.8
52	483246	Spring, Idler
53	482295	Wheel, Anti-Scalp
54	04019-03	Nut, Serrated Flange 5/16-18
55	461926	Shaft Weldment
56	04001-09	Bolt, Hex Head 5/16-18 x 1"
57	04019-04	Nut, Serrated Flange 3/8-16
58	04003-26	Bolt, Carriage 3/8-16 x 4"
59	481632	Wheel, Anti-Scalp
60	04017-27	Bolt, Hex Head 3/8-16 x 1" Ser. Flg.
61	04021-05	Nut, Center Lock 3/8-16
62	422478	Bracket, Anti-Scalp

\* = California Models Only (not shown)

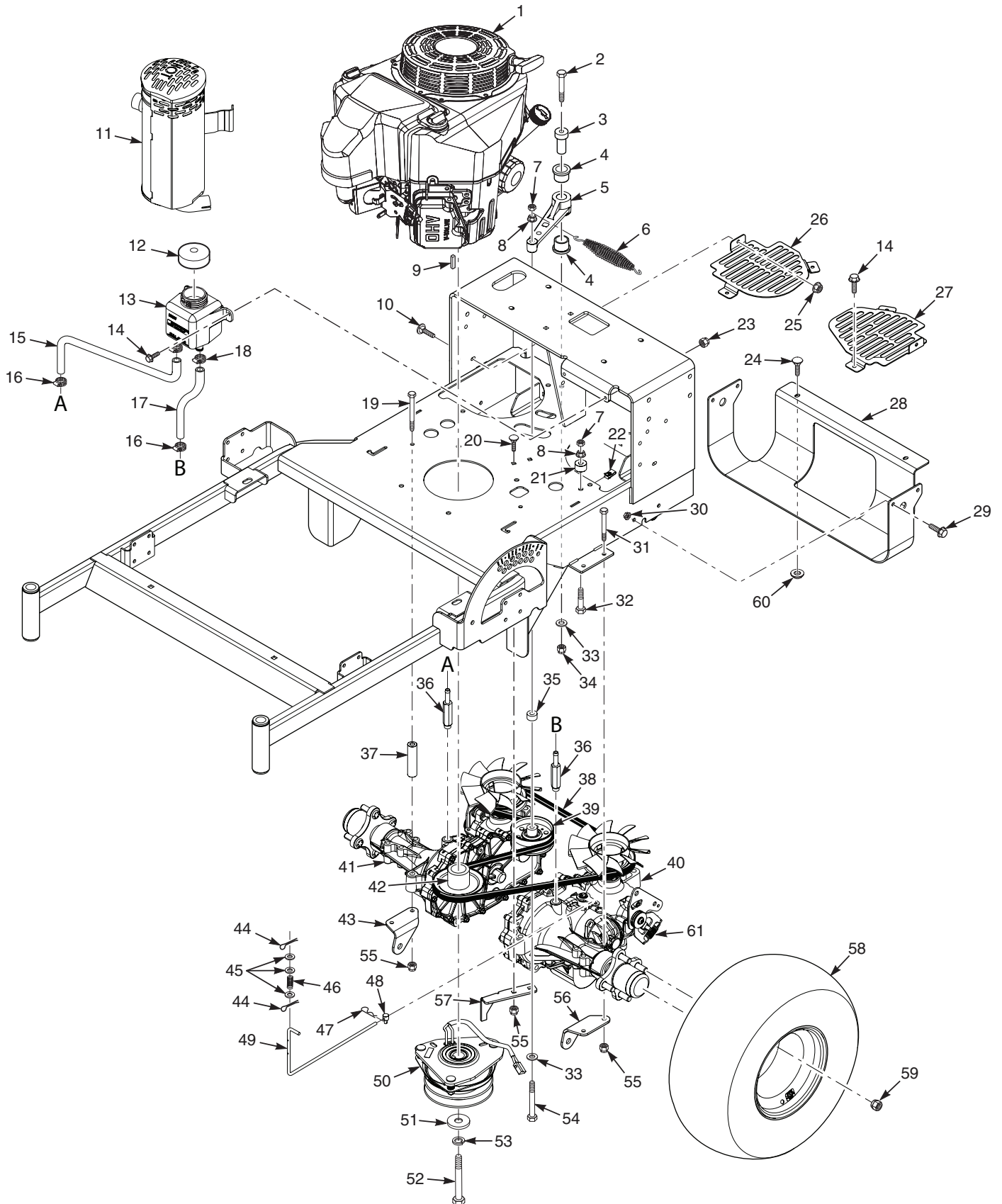
### CUTTER DECK CONTROLS



## CUTTER DECK CONTROLS

Ref. No.	Part No.	Description
1	481625-01	Knob W/Stud, 3/8-16 x 1-1/4"
2	04029-04	Wing Nut, 3/8" Plastic Small
3	462683	Belt Cover w/Decals
4	462522	Deck Bellcrank Assy. (Incl. item #8)
5	04021-09	Nut, Elastic Stop 3/8-16
6	04041-07	Flatwasher, 3/8-.391 x .938 x .105
7	43086	Bushing
8	484669	Grip, Deck Lift
9	04001-20	Bolt, Hex Head 3/8-16 x 1-1/2"
10	04019-04	Nut, Serrated Flange 3/8-16
11	483334	Bearing, Deck Lift
12	425209	Reinforcement, Bearing
13	04017-17	Cpscrw, 5/16-18 x 1"Serrated Flange Hex Head
14	04021-04	Nut, Center Lock 5/16-18
15	452018	Deck Lift Weldment, Front
16	425968	Link, Decklift
17	462677	Frame w/Decals (SWZT 36 & 48)
	462678	Frame w/Decals (SWZT 52)
18	04062-04	Hair Pin Cotter
19	483345	Pin Assembly w/Lanyard
20	04001-31	Bolt, Hex Head 3/8-16 x 2-1/2"
21	04041-07	Flatwasher, 3/8-.391 x .938 x .105
22	48540	Chain
23	48114-04	Grease Fitting
24	04003-23	Bolt, Carriage 3/8-16 x 1"
25	9275	Flat-Free Tire Assy. (Incl. #26, #27, #28)
26	481770	Retainer, Caster Wheel Bearing
27	481769	Roller Bearing, Caster Wheel
28	48114-03	Grease Fitting, 45 Degree 1/4-28
29	04021-07	Nut, Elastic Stop 1/2-13
30	45006	Caster Yoke
31	43022	Sleeve, Caster Wheel Bearing
32	04001-37	Bolt, Hex Head 1/2-13 x 5-1/2"
33	04066-01	Quick Pin
34	48100-01	Bronze Bearing
35	04024-02	Nut, Push-On 3/8"
36	04110-03	U-Nut 3/8-16
37	425970	Bracket, Deck Height
38	43805	Spacer

### ENGINE DECK & HYDRAULIC SYSTEM



## ENGINE DECK & HYDRAULIC SYSTEM

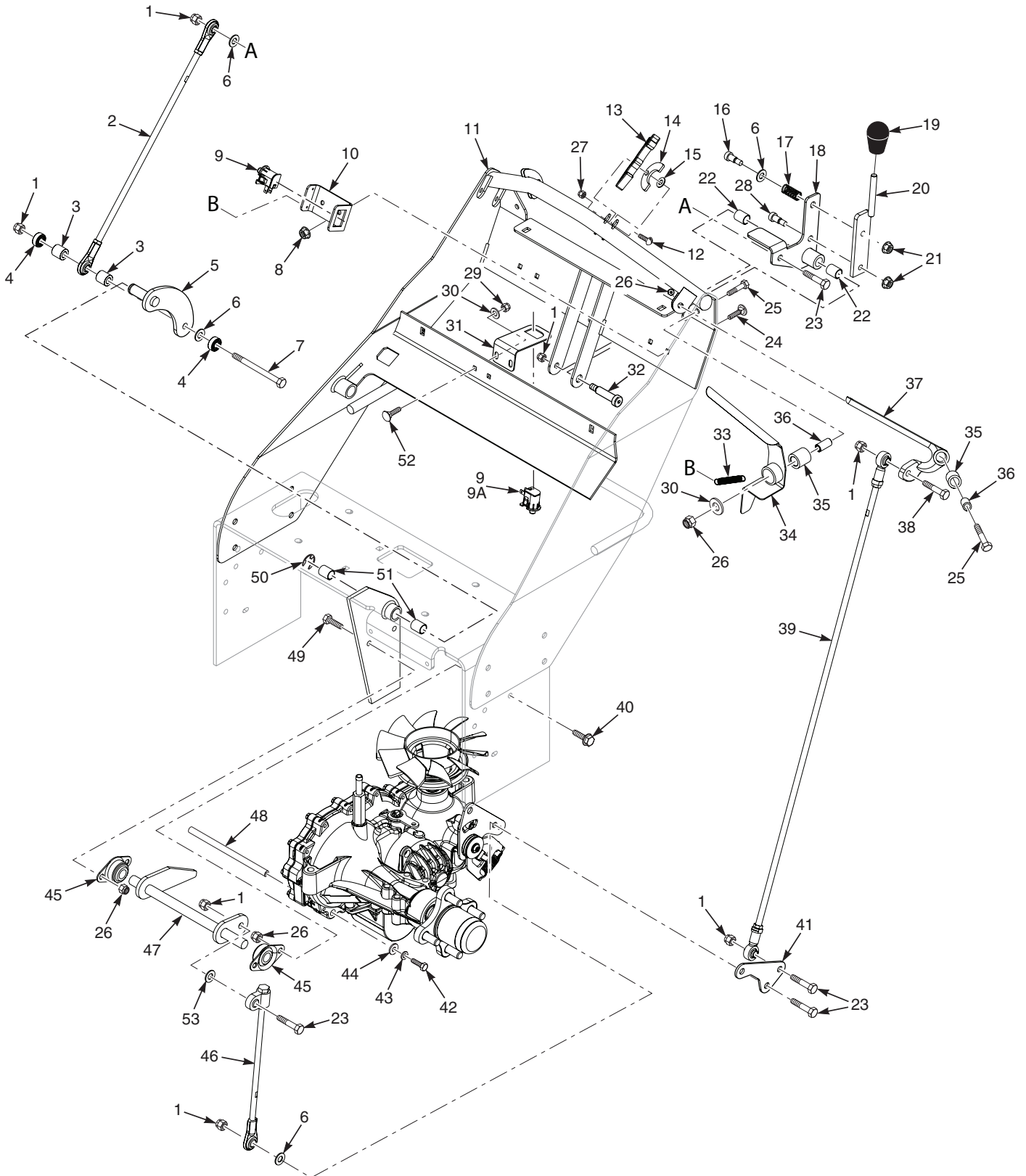
Ref. No.	Part No.	Description	Ref. No.	Part No.	Description
1	*484636	Engine, Kawasaki FS481V***	32	04001-135	Bolt, Hex Head 3/8-16 x 1-3/4"
	*485014	Engine, Kawasaki FS481V	33	04043-04	Flatwasher, 3/8-.391 x .938 x .105 Hardened
	*484637	Engine, Kawasaki FS541V***	34	04021-09	Nut, Elastic Stop 3/8-16
	*485015	Engine, Kawasaki FS541V	35	43720	Spacer
	*485016	Engine, Kawasaki FS600V (Recoil Start)	36	482800-04	Fitting, Transmission
	*485023	Engine, Kawasaki FS600V (Electric Start)	37	43880	Spacer, Axle
2	04001-54	Bolt, Hex Head 3/8-16 x 3"	38	484578	Belt, Transmission Drive
3	43715	Pivot, Idler	39	483638	Pulley, 3-1/2" Dia.
4	483453-04	Bearing	40	484576	**Transaxle Assy., (ZH-GMCC-3LUB-1MXX)
5	462122	Idler Arm (incl. item #4)	41	484577	**Transaxle Assy., (ZH-KMCC-3LUC-1MXX)
6	483087	Spring, Transmission Idler	42	484595	Pulley, 4-1/2" Dia. 1" Bore
7	04021-05	Nut, Center Lock 3/8-16	43	425954	Pusharm Mount Bracket, RH
8	04019-04	Nut, Serrated Flange 3/8-16	44	04061-01	Cotter Pin, 3/32 x 1"
9	04063-03	Key, 1/4 x 1/4 x 2-1/2"	45	04040-14	Flatwasher, 1/4-.312 x .750 x .065
10	04003-02	Bolt, Carriage 1/4-20 x 3/4"	46	482070	Spring, Dump Valve Link
11	484620	Muffler, Kawasaki FS/FX	47	04069-01	Pin, Rue Cotter 3/8" Dia.
12	483514	Cap	48	43876	Joint, Swivel
13	483438	Reservoir Assembly (incl item #12)	49	44188	Link, Dump Valve
14	04017-05	Bolt, Hex Head, Serrated Flng 1/4-20 x 3/4"	50	462610	Electric Clutch Assembly
15	484664	Hose, RH Transmission	51	04041-28	Flatwasher, 7/16-.469 x 1.75 x .25
16	48136-13	Clamp, 0.69" Max Dia.	52	04102-06	Bolt, Hex Head 7/16-20 x 3" w/t Patch
17	484663	Hose, LH Transmission	53	04030-05	Lockwasher, 7/16" spring
18	48136-05	Clamp, 0.87" Max Dia.	54	04001-51	Bolt, Hex Head 3/8-16 x 3-3/4"
19	04001-196	Bolt, Hex Head 5/16-18 x 6-1/2"	55	04021-10	Nut, Elastic Stop 5/16-18
20	04003-04	Bolt, Carriage 5/16-18 x 1"	56	425953	Pusharm Mount Bracket, LH
21	43282	Spacer	57	425696	Bracket, Anti-Rotation
22	04110-01	U-Nut, 1/4-20	58	484682	Wheel Assembly 18 x 6.5-8 (36" Only)
23	04021-08	Nut, Elastic Stop 1/4-20		481871	Tire 18 x 6.5-8 (36" Only)
24	04003-12	Bolt, Carriage 5/16-18 x 3/4		481867	Wheel Assembly 18 x 8.5-8 (48" Only)
25	04019-02	Nut, Serrated Flange 1/4-20		481869	Tire 18 x 8.5-8 (48" Only)
26	425923	Fan Cover, RH	59	04028-02	Wheel Nut, 1/2-20
27	425922	Fan Cover, LH	60	04024-03	Nut, Push-On 5/16-18
28	425778	Skid Plate	61	484600	Spring, RTN
29	04017-16	Cpscrw, 5/16-18 x 3/4"Serrated Flange HH			
30	04019-03	Nut, Serrated Flange 5/16-18			
31	04001-49	Bolt, Hex Head 5/16-18 x 3"			

\* Available through the individual engine manufacturer.

\*\* RTN Spring is Scag p/n 484600. See item #61

\*\*\* Used on units with a serial number of J3400001 to J3599999 Only

### STEERING CONTROLS

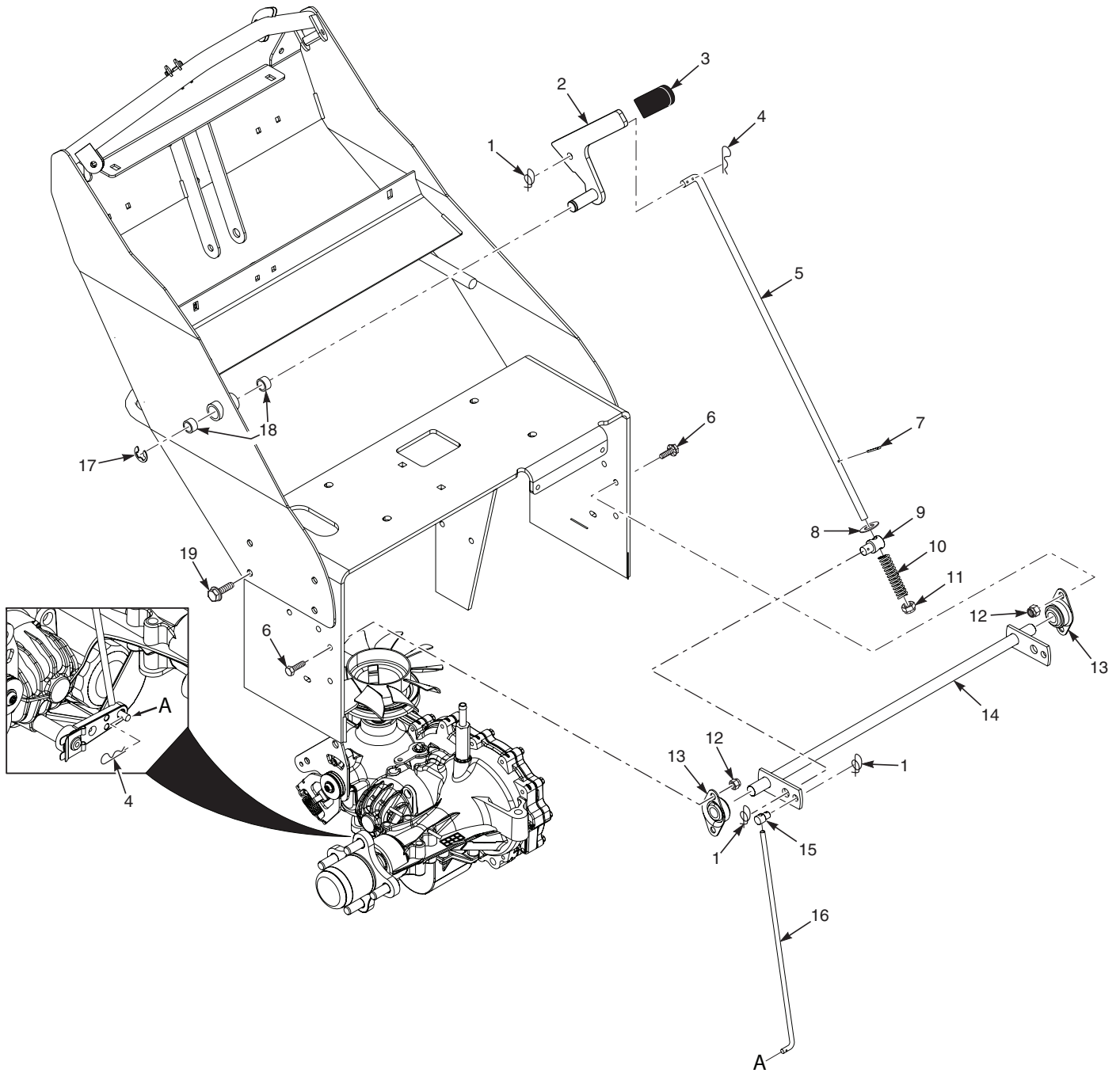


## STEERING CONTROLS

Ref. No.	Part No.	Description
1	04021-09	Nut, Elastic Stop 3/8-16
2	484589	Linkage, Speed Control
3	43674	Spacer
4	484035	Bearing
5	452363	Neutral Plate Weldment
6	04040-05	Flatwasher, 3/8-.406 x .812 x .065
7	04001-77	Bolt, Hex Head 3/8-16 x 3-1/2"
8	04019-02	Nut, Serrated Flange 1/4-20
9	48717	Switch (Manual Start)
9A	483473	Switch (Electric Start Only)
10	425937	Bracket, Operator Presence Switch
11	462574	Handle Assy, W/Decals
12	04010-33	Machine Screw, #10-32 x 1-1/4", Pan Head
13	484609	Latch, Thumb
14	484749	Plate, Anti-Friction
15	04032-05	Washer, 1/4" Curved Spring
16	04009-11	Bolt, Shoulder 3/8 x 1"
17	483601	Spring, Speed Control
18	462575	Neutral Handle Assy (incl item #22)
19	484672	Knob, Soft Touch
20	452118	Handle Weldment, Speed Control
21	04019-03	Nut, Serrated Flange 5/16-18
22	483453-19	Bearing, Plastic 1/2" I.D.
23	04001-20	Bolt, Hex Head 3/8-16 x 1-1/2"
24	04003-09	Bolt, Carriage 1/4-20 x 1-1/4"
25	04001-12	Bolt, Hex Head 5/16-18 x 1-3/4"
26	04021-10	Nut, Elastic Stop 5/16-18
27	04021-01	Nut, Elastic Stop #10-32
28	04009-14	Bolt, Shoulder 3/8 x .375"

Ref. No.	Part No.	Description
29	04021-08	Nut, Elastic Stop 1/4-20
30	04040-15	Flatwasher, 5/16-.375 x .875 x .083
31	425948	Bracket, Neutral Switch (Manual Start)
	426568	Bracket, Neutral Switch (Electric Start Only)
32	04009-16	Bolt, Shoulder 1/2 x 2"
33	484670	Spring, Operator Presence
34	462494	Handle, Op. Presence-LH (incl item #35)
	462495	Handle, Op. Presence-RH (incl item #35)
35	483453-22	Bearing
36	43866	Sleeve, Pivot
37	462489	Handle Assembly-LH (incl item #35)
	462490	Handle Assembly-RH (incl item #35)
38	04001-21	Bolt, Hex Head 3/8-16 x 1-3/4"
39	484579	Linkage, Steering
40	04017-16	Cpscrw, 5/16-18 x 3/4"Serrated Flange HH
41	425756	Bracket, Transaxle Control
42	04001-45	Bolt, Hex Head 3/8-16 x 2"
43	04030-04	Lockwasher, 3/8" Spring
44	04041-07	Flatwasher, 3/8-.391 x .938 x .105
45	48796	Bearing, Self Aligning 5/8" I.D.
46	483574	Linkage, Pump
47	452300	Weldment, Bellcrank-LH
	452301	Weldment, Bellcrank-RH
48	43766	Spacer, Axles
49	04001-09	Bolt, Hex Head 5/16-18 x 1"
50	04050-01	Retaining Ring .625" EXT. "E"
51	484671-01	Bearing
52	04003-02	Bolt, Carriage 1/4-20 x 3/4"
53	04043-04	Flatwasher, 3/8-.391 x .938 x .105 Hardened

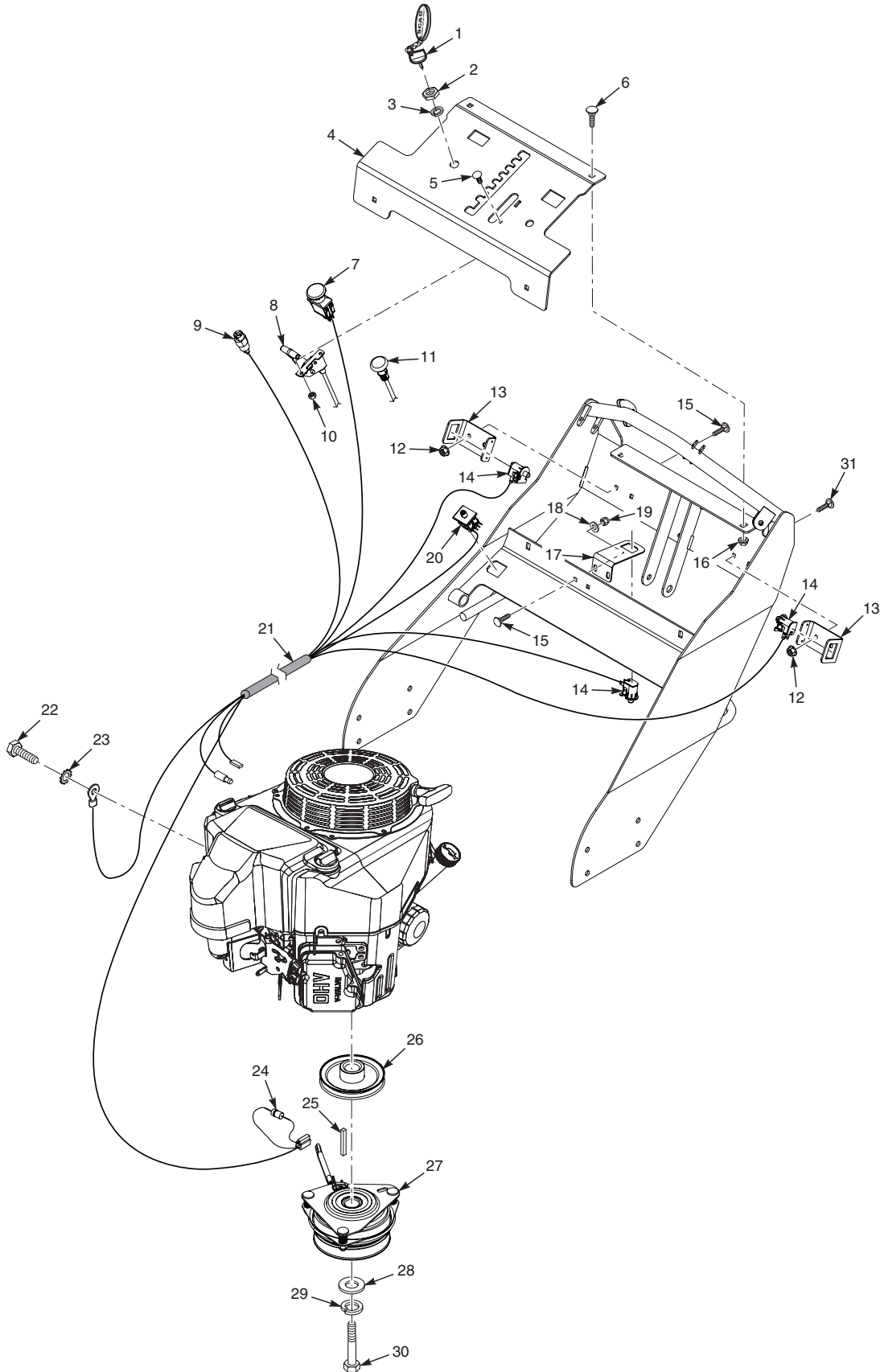
### BRAKE COMPONENTS



## BRAKE COMPONENTS

Ref. No.	Part No.	Description
1	04069-01	Pin, Rue Cotter 3/8" Dia.
2	462515	Brake Lever w/Grip
3	481548	Grip, Brake Lever
4	04062-02	Hair Pin, .080 x 1.19"
5	44187	Rod, Brake Linkage
6	04017-16	Cpscrw, 5/16-18 x 3/4"Serrated Flange HH
7	04061-02	Cotter Pin, 3/32 x 3/4"
8	04040-05	Flatwasher, 3/8-.406 x .812 x .065
9	43751	Bushing, Pivot Slide
10	484175	Spring, Brake
11	04021-18	Nut, Elastic Stop 3/8-24
12	04021-10	Nut, Elastic Stop 5/16-18
13	48796	Bearing, Self Aligning 5/8" I.D.
14	452358	Weldment, Brake Bellcrank
15	43726	Joint, Swivel
16	44165	Rod, Brake Adjustment
17	04050-01	Ring, Retaining 5/8" External "E"
18	483453-18	Bearing
19	04017-27	Cpscrw, 3/8-16 x 1"Serrated Flange HH

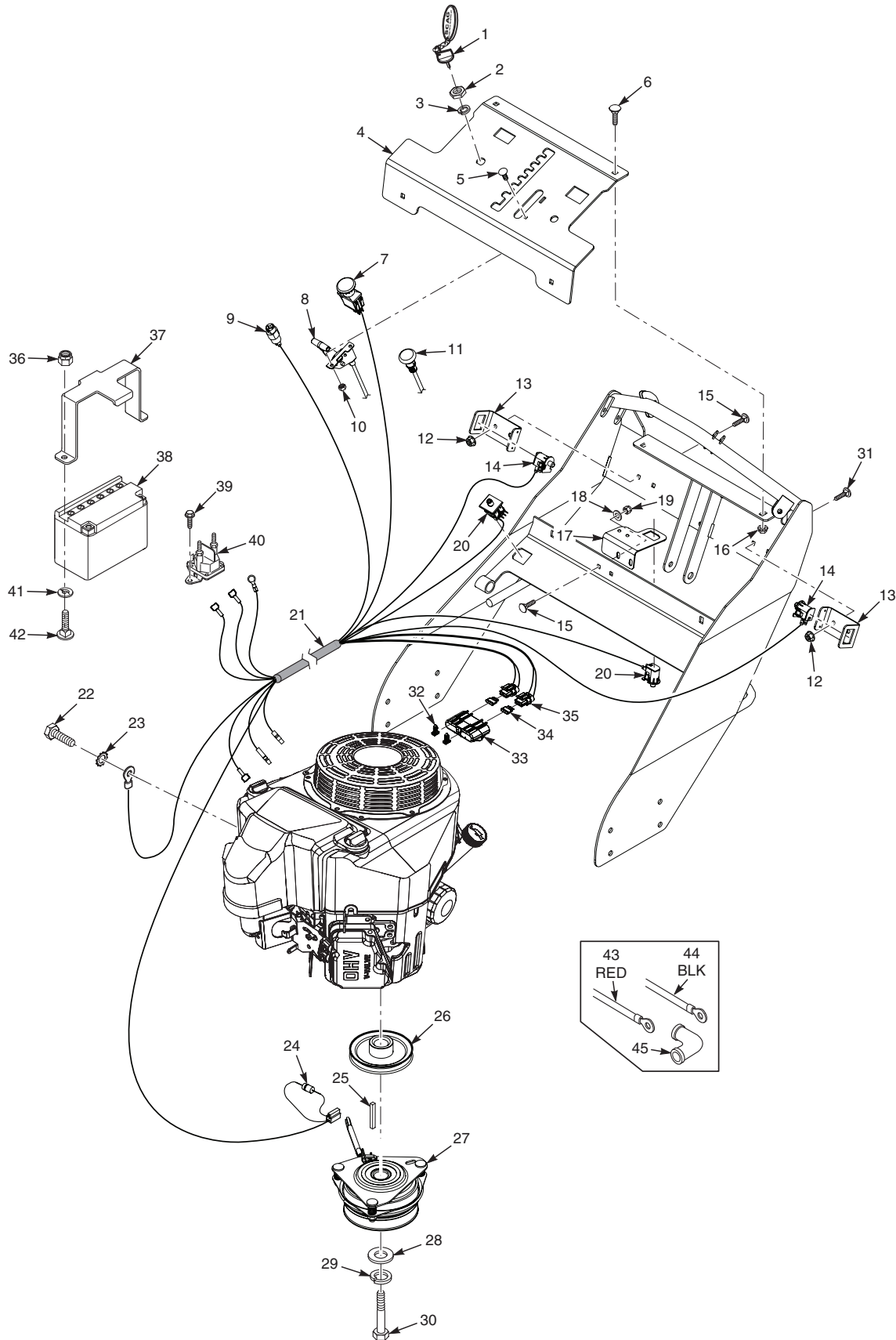
### ELECTRICAL SYSTEM AND THROTTLE CONTROL - MANUAL START



## ELECTRICAL SYSTEM AND THROTTLE CONTROL - MANUAL START

Ref. No.	Part No.	Description
1	462069 483609	Key Assembly w/Fob Key w/Shroud
2	48017-04	Nut, 5/8-32 Special
3	48017-03	Lockwasher, 5/8" Internal Tooth
4	462576	Instrument Panel w/Decal
5	04003-43	Bolt, Carriage #10-24 x 1/2"
6	04003-12	Bolt, Carriage 5/16-18 x 3/4"
7	483957	PTO Switch
8	484665	Throttle Cable
9	48609	Key Switch
10	04021-26	Nut, Elastic Stop #10-24
11	483552	Choke Control
12	04019-02	Nut, Serrated Flange 1/4-20
13	425937	Bracket, Operator Presence Switch
14	48717	Switch
15	04003-02	Bolt, Carriage 1/4-20 x 3/4"
16	04019-03	Nut, Serrated Flange 5/16-18
17	425948	Bracket, Neutral Switch
18	04040-15	Flatwasher, 5/16-.375 x .875 x .083
19	04021-08	Nut, Elastic Stop 1/4-20
20	483473	Switch, Brake Interlock
21	484625	Wire Harness
22	04002-17	Bolt, Hex Head M8-1.25 x 14
23	04031-03	Lockwasher, 5/16" External Tooth
24	483958	Diode
25	04063-03	Key, 1/4 x 1/4 x 2-1/2"
26	484595	Pulley, 4-1/2" Dia. 1" Bore
27	462610	Electric Clutch Assembly
28	04041-28	Flatwasher, 7/16-.469 x 1.75 x .25
29	04030-05	Lockwasher, 7/16" spring
30	04102-06	Bolt, Hex Head 7/16-20 x 3" w/t Patch
31	04003-09	Bolt, Carriage 1/4-20 x 1-1/4"

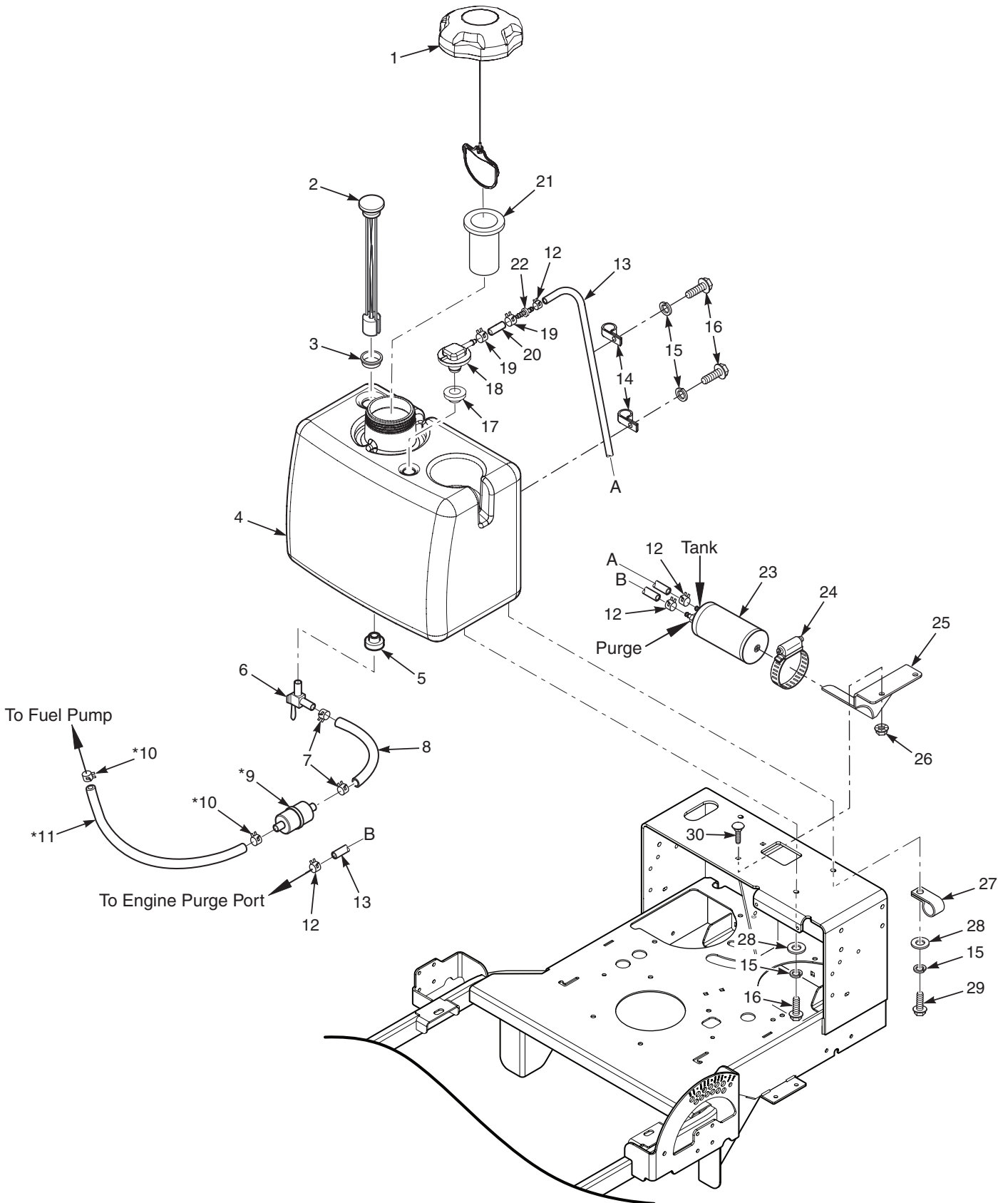
### ELECTRICAL SYSTEM AND THROTTLE CONTROL - ELECTRIC START



## ELECTRICAL SYSTEM AND THROTTLE CONTROL - ELECTRIC START

Ref. No.	Part No.	Description
1	462069 483609	Key Assembly w/Fob Key w/Shroud
2	48017-04	Nut, 5/8-32 Special
3	48017-03	Lockwasher, 5/8" Internal Tooth
4	462684	Instrument Panel w/Decal
5	04003-43	Bolt, Carriage #10-24 x 1/2"
6	04003-12	Bolt, Carriage 5/16-18 x 3/4"
7	483957	PTO Switch
8	484665	Throttle Cable
9	48798	Key Switch
10	04021-26	Nut, Elastic Stop #10-24
11	483552	Choke Control
12	04019-02	Nut, Serrated Flange 1/4-20
13	425937	Bracket, Operator Presence Switch
14	48717	Switch
15	04003-02	Bolt, Carriage 1/4-20 x 3/4"
16	04019-03	Nut, Serrated Flange 5/16-18
17	426568	Bracket, Neutral Switch
18	04040-15	Flatwasher, 5/16-.375 x .875 x .083
19	04021-08	Nut, Elastic Stop 1/4-20
20	483473	Switch, Brake Interlock
21	485184	Wire Harness
22	04002-17	Bolt, Hex Head M8-1.25 x 14
23	04031-03	Lockwasher, 5/16" External Tooth
24	483958	Diode
25	04063-03	Key, 1/4 x 1/4 x 2-1/2"
26	484595	Pulley, 4-1/2" Dia. 1" Bore
27	462610	Electric Clutch Assembly
28	04041-28	Flatwasher, 7/16-.469 x 1.75 x .25
29	04030-05	Lockwasher, 7/16" spring
30	04102-06	Bolt, Hex Head 7/16-20 x 3" w/t Patch
31	04003-09	Bolt, Carriage 1/4-20 x 1-1/4"
32	482588	Clip, Wire
33	483571	Cover, Sealed Double
34	48298	Fuse, 20 Amp
35	483629	Fuse Holder
36	04021-10	Nut, Elastic Stop 5/16-18
37	426140	Bracket, Battery
38	484805	Battery (not available through Scag)
39	04011-13	Screw, Self Tapping 1/4-20 x 3/4"
40	483278	Solenoid, Sealed
41	04024-03	Nut, Push-On 5/16"
42	04003-04	Bolt, Carriage 5/16-18 x 1"
43	48029-09	Cable, Battery - Red
44	48029-25	Cable, Battery - Black
45	48126	Rubber Boot

### SWZT FUEL SYSTEM

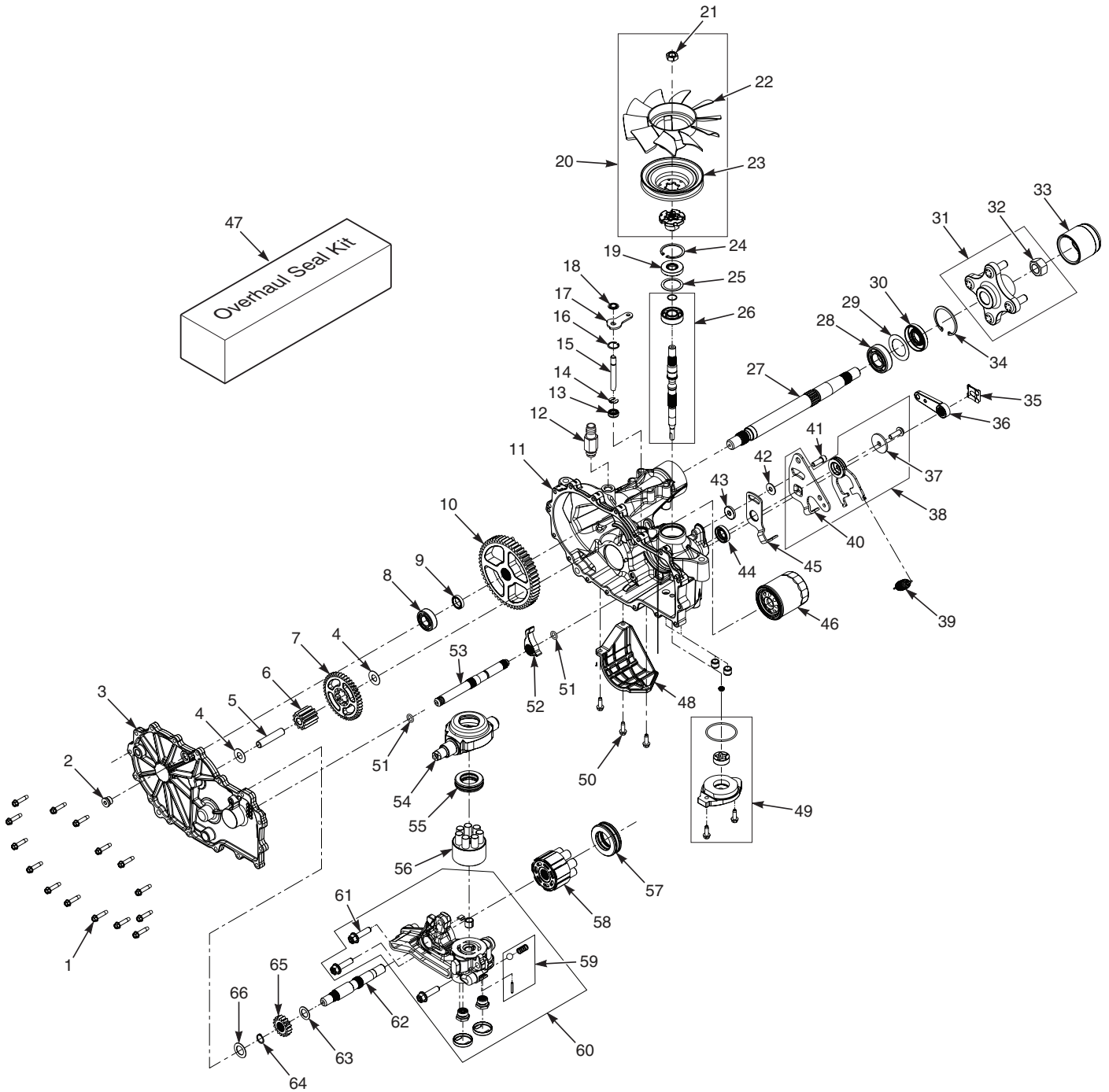


## SWZT FUEL SYSTEM

Ref. No.	Part No.	Description
1	484286	Fuel Cap w/ Tether
	484297	Fuel Cap w/ Tether - California Models Only (not shown)
2	484259	Fuel Gauge Assembly (incl. #3)
3	484242	Seal, Fuel Gauge
4	462375	Fuel Tank Assembly (incl. #2, 3, 5, 6, 17, 18)
5	482571	Bushing, .56 Dia. Viton
6	483747	Ball Valve w/Screen
7	48059-01	Clamp, Fuel Hose
8	483617	Fuel Hose, 1/4" ID (order by inch)
9	*	Fuel Filter
10	*	Clamp, Fuel Hose
11	*	Fuel Hose
12	48059-05	Clamp, Vapor Recovery Hose 3/16"
13	484345	Hose, Vapor Recovery 3/16" (order by inch)
14	48030-22	Clamp, 3/8"
15	04030-03	Lockwasher, 5/16" Spring
16	04001-08	Bolt, Hex Head 5/16-18 x 3/4"
17	484285	Grommet, Viton
18	484333	Fitting, Remote Vent
19	48059-02	Clamp, Fuel Hose 7/32" ID
20	484347	Hose, Vapor Recovery 1/4" (order by inch)
21	484279-01	Tube, Fuel Tank Insert - 4"
22	484343-01	Mender, 1/4 x 3/16 w/.02 Hole
23	484287	Carbon Canister
24	48136-17	Clamp
25	452176	Bracket, Canister Mounting
26	04019-03	Nut, Serrated Flange 5/16-18
27	48030-09	Clamp, 1/2"
28	04040-15	Flatwasher, 5/16-.375 x .875 x .083
29	04001-09	Bolt, Hex Head 5/16-18 x 1"
30	04003-12	Bolt, Carriage 5/16-18 X 3/4"

\* = Available through engine manufacturer only.

### ZT-2800 HYDRAULIC AXLE ASSEMBLY



## ZT-2800 HYDRAULIC AXLE ASSEMBLY

Ref. No.	Part No.	Description	Ref. No.	Part No.	Description
1	HG53246	Bolt, Hex Head 1/4-20 x 1-1/8"	35	HG52027	Clip, Retaining
2	HG9005110-5600	Plug, 9/16-18	36	HG53973	Handle, Brake
3	HG71574*	Kit, Side Cover *	37	HG51950	Washer, .343 x 1.5 x .062
	HG71572**	Kit, Side Cover **	38	HG71594*	Kit, RTN Assembly *
4	HG50132	Washer, .5 x 1.0 x .03		HG71589**	Kit, RTN Assembly **
5	HG51083	Jackshaft Pin	39	484600	Spring, RTN
6	HG52583	Gear, 11T	40	HG51842*	Arm, Control *
7	HG52148	Gear, 43T		HG51841**	Arm, Control **
8	HG44121	Bearing, Ball .75 x 40 x 12	41	HG51616	Bolt, 5/16-24 x 7/8" Patch
9	HG53336	Spacer, .75 x 1.32 x .257	42	HG44130	Washer, .34 x .88 x .06
10	HG52108	Gear, 54T	43	HG52527	Spacer, .320 x 1.005 x .150
11	HG71421*	Kit, Housing *	44	HG51140	Seal, Lip 12 x 32 x 7
	HG71413**	Kit, Housing **	45	HG72432*	Arm, Neutral *
12	482800-04	Fitting, Transmission		HG72431**	Arm, Neutral **
13	HG51626	Seal, Lip .375 x .75 x .25	46	HG52114	Filter
14	HG51628	Ring, .Retaining .375 External	47	HG71410	Seal Kit
15	HG52136	Rod, By-Pass	48	HG53644*	Filter Guard *
16	HG51627	Ring, Retaining .750 Internal		HG53655**	Filter Guard **
17	HG51629	Arm, By-Pass	49	HG72274	Kit, Charge Pump
18	HG51630	Ring, .Retaining .375 External	50	HG50752	Bolt, 1/4-20 x 3/4"
19	HG51161	Seal, Lip 17 x 40 x 7	51	HG51804	O-Ring
20	HG72124	Kit, Fan & Pulley	52	HG52766	Pawl, Brake
21	HG51244	Nut, Hex Locking 1/2-20	53	HG53539	Shaft, Brake
22	HG53821	Fan	54	HG51048	Trunnion Swashplate
23	HG53804	Pulley	55	HG50551	Thrust Bearing
24	HG50329	Ring, Retaining 2.06 Internal	56	HG70723	Kit, Cylinder Block
25	HG50951	Washer, 1.23 x 1.56 x .04	57	HG51462	Thrust Bearing
26	HG71442	Kit, Shaft, Input	58	HG71579	Kit, Motor Cylinder Block
27	HG71569	Kit, Shaft, Axle	59	HG71436	Kit, Charge Relief
28	HG53656	Bearing, Ball 1.0 x 52 x 15 Open	60	HG72412*	Kit, Center Section *
29	HG53514	Spacer, 1.355 x 2.035 x .021		HG72413**	Kit, Center Section **
30	HG53699	Seal, Lip TC4 1.0 x 2.06 x .38	61	HG52137	Bolt, Hex Head 3/8-16 x 1-1/2" Patch
31	HG71446	Hub Kit	62	HG52150	Shaft, Motor
32	HG50863	Nut, Hex Locking	63	HG51069	Washer, .72 x 1.16 x .04
33	HG53501	Cap, Axle	64	HG44145	Ring, Retaining
34	HG50859	Ring, Retaining 2.06 Internal	65	HG52149	Gear, 16T
			66	HG44371	Washer, .63 x 1.0 x .05

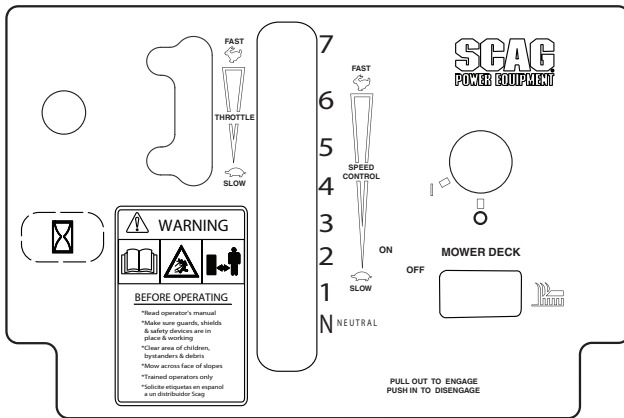
- NOTE -

Refer to label on transaxle for identification

\*ZH-KMCC-3LUC-1MXX

\*\*ZH-GMCC-3LUB-1MXX

### REPLACEMENT DECALS AND INFORMATION PLATES



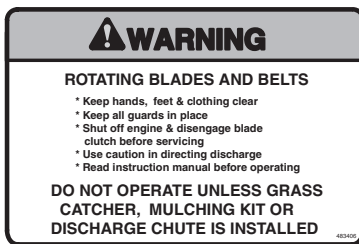
1



2



3



5



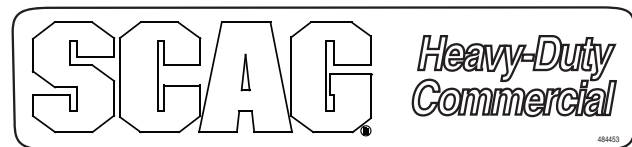
4



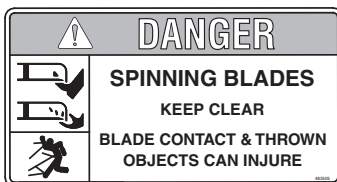
6



7



8



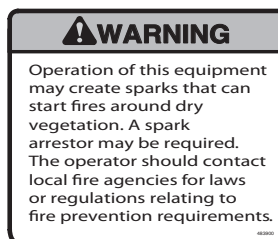
9



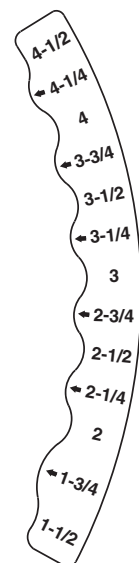
10



11



12



13



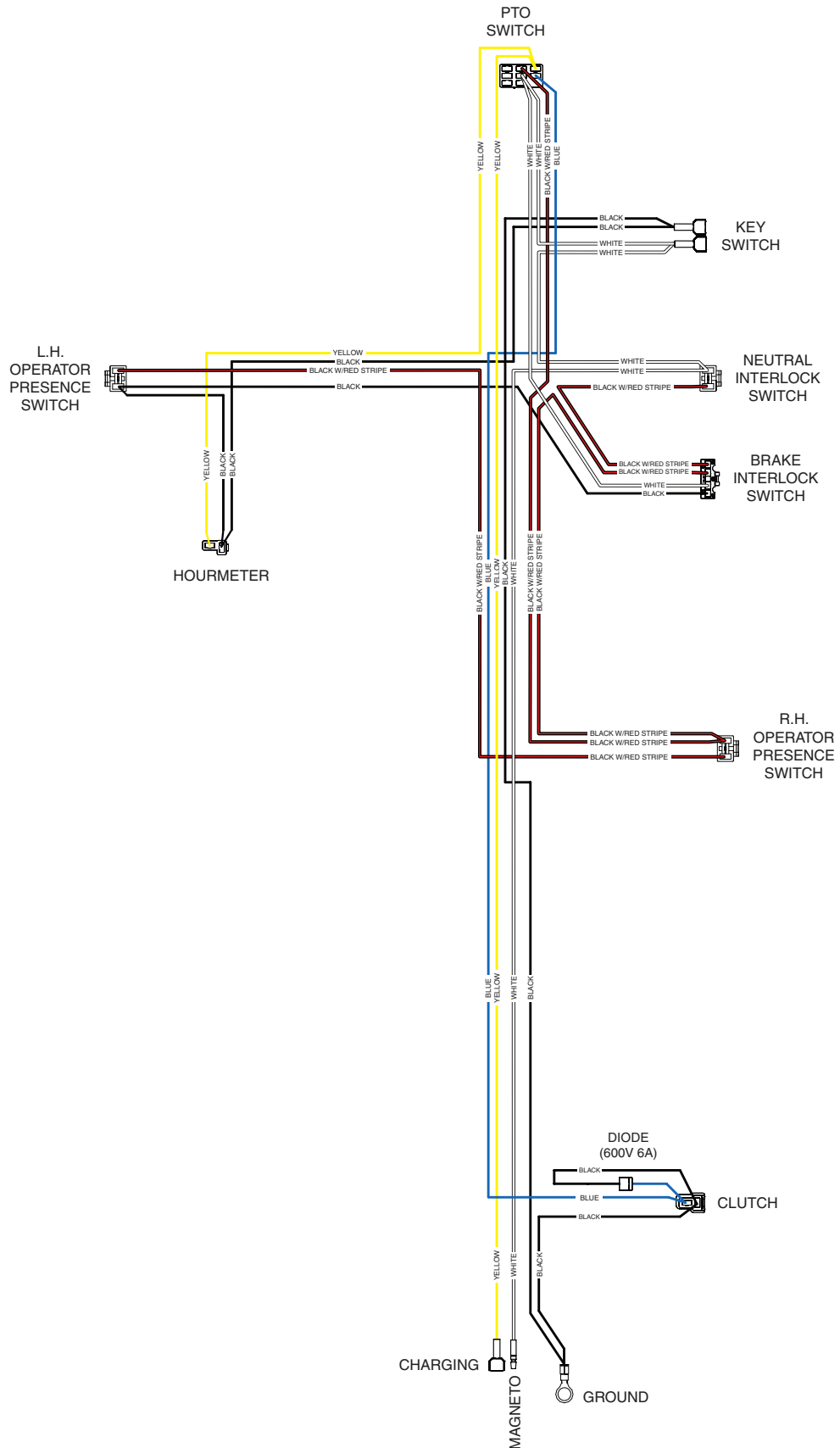
14

(supplied with California models only)

## REPLACEMENT DECALS AND INFORMATION PLATES

Ref. No.	Part No.	Description
1	484662	Decal, Instrument Panel (Manual Start)
	485185	Decal, Instrument Panel (Electric Start Only)
2	48314	Decal, Scag Logo
3	483402	Decal, Belt Cover
4	484673	Decal, Handle - LH
	484674	Decal, Handle - RH
5	483406	Decal, Warning-Rotating Blades
6	48404	Decal, Metalcraft - Made in USA
7	483710	Decal, 36 Commercial
	483494	Decal, 48 Commercial
8	484453	Decal, Scag Heavy Duty
9	483505	Decal, Spinning Blades
10	483404	Decal, Sulky Attachment
11	483727	Decal, Scag Logo
12	483900	Decal, Warning Spark Arrestor
13	484661	Decal, Height of Cut
14	483405	Decal, Warning
*	461986	Spanish Decal Kit (not shown)

### SWZT ELECTRICAL SCHEMATIC - MANUAL START



### SWZT ELECTRICAL SCHEMATIC - ELECTRIC START

